

BOX SCORE: *** FINAL ***

Date: 03-24-88 Site: State Tourney, Frankfort Attendance: 3,450

Team: Phelps

NO.	NAME	TOTAL FG		3-POINT		FT	FTA	REB			PF	TP	A	TO	BLK	S	MIN
		FG	FGA	FG	FGA			O	D	T							
21	Mullins, Becky	4	6	0	0	0	0	2	2	4	3	8	1	3	0	2	29
24	Maynard, Marsha	5	10	2	5	2	2	4	2	6	2	14	0	1	0	1	29
42	Allen, Beth	4	9	0	0	0	0	2	5	7	5	8	0	0	3	1	21
04	Dotson, Krystal	3	6	0	2	0	0	0	2	2	4	6	7	5	0	2	27
14	Preece, Angie	0	2	0	0	0	0	0	0	0	5	0	2	2	0	0	6
10	Blankenship, J.	1	1	0	0	1	2	0	3	3	2	3	0	2	0	0	9
12	Gannon, Renae	0	3	0	2	0	0	0	2	2	4	0	0	4	0	0	9
03	Preece, Allyson	1	6	1	6	0	0	0	1	1	2	3	0	2	0	1	7
23	Francis, Melody	1	3	0	0	0	0	0	2	2	0	2	0	1	0	1	14
22	Wolford, Nykole	1	1	0	0	0	0	0	0	0	3	2	0	1	0	0	7
32	Hatfield, Tif.	0	0	0	0	0	0	0	0	0	0	0	0	0	0	0	2
30	Smith, Stephanie	0	0	0	0	0	0	0	0	0	0	0	1	0	0	0	0
TEAM								2	1	3							
TOTALS		20	47	3	15	3	4	10	20	30	30	46	11	21	3	8	160
Percentages:		Game-----		FG					3-PT.								
		Period 1		20/ 47				42.6%		3/ 15		20.0%		FT	3/ 4		75.0%
		Period 2		2/ 10				20.0%		0/ 2		0.0%			1/ 2		50.0%
		Period 3		4/ 9				44.4%		1/ 4		25.0%			0/ 0		0.0%
		Period 4		7/ 14				50.0%		1/ 4		25.0%			2/ 2		100.0%
		Period 4		7/ 14				50.0%		1/ 5		20.0%			0/ 0		0.0%

Team: Clay County

NO.	NAME	TOTAL FG		3-POINT		FT	FTA	REB			PF	TP	A	TO	BLK	S	MIN
		FG	FGA	FG	FGA			O	D	T							
24	Carpenter, Ruth	0	4	0	0	3	6	0	0	0	1	3	0	2	0	0	19
40	Messer, Michelle	1	3	0	0	3	6	2	4	6	3	5	0	3	0	1	26
54	Grant, Gretchen	4	7	0	0	3	4	2	3	5	2	11	0	1	0	3	30
22	Feltner, Susan	7	9	4	5	6	6	2	2	4	0	24	4	2	0	5	30
32	Jones, Kim	0	4	0	1	13	19	2	1	3	1	13	3	4	0	3	32
50	Smith, Emily	0	0	0	0	2	4	1	0	1	0	2	0	0	0	0	9
42	Curry, Tina	2	5	1	3	0	1	0	1	1	0	5	1	1	0	0	14
20	Ponder, Katrina	0	0	0	0	0	0	0	0	0	0	0	0	0	0	0	1
44	Howard, Angela	1	1	0	0	0	0	1	0	1	0	2	0	0	0	0	0
TEAM								1	2	3							
TOTALS		15	33	5	9	30	46	11	13	24	7	65	8	13	0	12	161
Percentages:		Game-----		FG					3-PT.								
		Period 1		15/ 33				45.5%		5/ 9		55.6%		FT	30/ 46		65.2%
		Period 2		7/ 10				70.0%		2/ 2		100.0%			8/ 10		80.0%
		Period 3		3/ 10				30.0%		1/ 3		33.3%			5/ 9		55.6%
		Period 4		4/ 11				36.4%		2/ 4		50.0%			1/ 4		25.0%
		Period 4		1/ 2				50.0%		0/ 0		0.0%			16/ 23		69.6%

OFFICIALS: Keith Walker, Tom Thompson, Alt.-L. Holmes
 Technicals: None

SCORE BY PERIODS
 Phelps 5 9 17 15 = 46
 Clay County 24 12 11 18 = 65

Phelps "Lady Hornets" vs Clay County "Tigerettes"
2nd Half Play by Play

PAGE : 2

Tip off at 2:30 on 03/24/88 at State Tourney, Frankfort
Produced by the K.H.S.A.A. Stat Crew with FINL III™

Player	Team	Clay County	Time	Score	Phelps	Player	Team
Feltner, Susan	Jones, Kim	Curry, Tina, Smith, Emily, Grant, Gretchen			Dotson, Krystal, Francis, Melody, Mullins, Becky, Maynard, Marsha, Allen, Beth		
2-5	40.0%	15-32 46.8%					
		Ball to Tigerettes					
		8 ft Left Base Line Driving by Curry, Tina	4 7:48	*49-31			
			4 7:36	49-33*	4 ft Lane Driving by Mullins, Becky	3-5	60.0% 14-34 41.1%
			4 7:15		Foul on Maynard, Marsha	2	5
			4 7:15				
2-2	100%	16-25 64.0%	4 7:15	*51-33			
1		4	4 6:34				
		Sub In: Messer, Michelle Out: Smith, Emily	4 6:34				
		Feltner, Susan, 2 Free Throws made both	4 6:34	51-35*	6 ft Left Side Bank by Mullins, Becky	4-6	66.6% 15-36 41.6%
		Foul on Jones, Kim			Assist by Dotson, Krystal	6	8
		Sub In: Carpenter, Ruth Out: Curry, Tina	4 6:13	51-38*	3 pt 21 ft Right Side Jump shot by Maynard, Marsha	5-8	62.5% 16-37 43.2%
					Assist by Mullins, Becky	1	9
			4 5:46		Foul on Dotson, Krystal	2	6
4-4	100%	18-27 66.6%	4 5:44	*53-38			
		Feltner, Susan, 2 Free Throws made both	4 5:26		Sub In: Wolford, Mykole Out: Francis, Melody		
			4 5:06		Foul on Allen, Beth	4	7
6-6	100%	20-29 68.9%	4 5:06	*55-38			
		Feltner, Susan, 2 Free Throws made both	4 4:34		Foul on Wolford, Mykole	3	8
1-4	25.0%	21-31 67.7%	4 4:34	*56-38			
		Carpenter, Ruth, 1 & Bonus made 1st missed 2nd	4 4:24	56-40*	9 ft Right Side Jump shot by Allen, Beth	4-9	44.4% 17-39 43.5%
					Assist by Dotson, Krystal	7	10
			4 4:04		Foul on Dotson, Krystal	3	9
6-9	66.6%	21-32 65.6%	4 4:02				
		Jones, Kim, 1 & Bonus missed 1st	4 3:56	56-42*	8 ft Left Side Bank by Dotson, Krystal	2-4	50.0% 18-40 45.0%
			4 3:38		Foul on Mullins, Becky	3	10
7-11	63.6%	22-34 64.7%	4 3:38	*57-42			
		Jones, Kim, 1 & Bonus made 1st missed 2nd	4 3:35		Foul on Allen, Beth	5	11
			4 3:35		Sub In: Gannon, Renae Out: Allen, Beth		
3-5	60.0%	22-35 62.8%	4 3:35				
		Messer, Michelle, 1 & Bonus missed 1st	4 3:02		Foul on Dotson, Krystal	4	12
			4 2:57		Sub In: Preece, Allyson Out: Wolford, Mykole		
3-6	50.0%	22-36 61.1%	4 2:57				
		Messer, Michelle, 1 & Bonus missed 1st	4 2:55		Foul on Gannon, Renae	2	13
8-12	66.6%	23-37 62.1%	4 2:03	*59-44			
8-13	61.5%	23-38 60.5%	4 2:52				
		Jones, Kim, 1 & Bonus made both	4 2:37	58-44*	3 ft Lane Bank by Dotson, Krystal	3-6	50.0% 19-45 42.2%
		Jones, Kim, 1 & Bonus missed 1st					
		REB: 23 A: 8 BLK: 0 TO: 12 PF: 4	4 2:18				
		S: 10 FT: 23-38 60.5% FG: 15-33 45.4%					
		No. 3 Clay County			REB: 29 A: 10 BLK: 3 TO: 19 PF: 13		
					S: 7 FT: 3-4 75.0% FG: 19-45 42.2%		
			4 2:03		Foul on Preece, Allyson	1	14
3-6	50.0%	25-40 62.5%	4 2:03	*60-44			
		Carpenter, Ruth, 1 & Bonus made both	4 1:53		Foul on Preece, Allyson	2	15
10-15	66.6%	27-42 64.2%	4 1:53	*62-44			
		Jones, Kim, 1 & Bonus made both	4 1:29		Foul on Gannon, Renae	3	16
11-16	68.7%	28-43 65.1%	4 0:36	0-0*			
12-17	70.5%	29-44 65.9%	4 0:36	65-46*			
		Jones, Kim, 1 & Bonus made both	4 1:27		Subs In: Hatfield, Tif., Francis, Melody, Blankenship, J., Wolford, Mykole		
		Jones, Kim, 1 & Bonus made both			Out: Preece, Allyson, Dotson, Krystal, Mullins, Becky, Maynard, Marsha		
		Jones, Kim, 1 & Bonus missed 1st	4 0:45		Foul on Gannon, Renae	4	17
13-18	72.2%	30-45 66.6%	4 0:02	*65-46			
13-19	68.4%	30-46 65.2%	4 0:44				
		Jones, Kim, 1 & Bonus made both	4 0:36		Sub In: Smith, Stephanie Out: Gannon, Renae		
		Jones, Kim, 1 & Bonus missed 1st	4 0:36	65-46*	4 ft Lane Turnaround by Blankenship, J.	1-1	100% 20-47 42.5%
					Assist by Smith, Stephanie	1	11

Phelps "Lady Hornets" vs Clay County "Tigerettes"
2nd Half Play by Play

Tip off at 2:30 on 03/24/88 at State Tourney, Frankfort
Produced by the K.H.S.A.A. Stat Crew with FINL III**

PAGE : 1

Player Team Clay County
Carpenter, Ruth, Messer, Michelle, Grant, Gretchen, Feltner, Susan, Jones, Kim
Ball to Tigerettes

Time Score Phelps Player Team
Mullins, Becky, Maynard, Marsha, Allen, Beth, Dotson, Krystal, Preece, Angie

3-4 75.0% 14-21 66.6% Messer, Michelle, 2 Free Throws missed 1st made 2nd

3 7:07 35-16* 7 ft Left Side Bank by Allen, Beth 2-4 50.0% 7-21 33.3%
3 6:35 36-18* Driving Layup by Allen, Beth 3-5 60.0% 8-22 36.3%
3 6:22 Foul on Preece, Angie 1 4
3 6:22 *37-18 4 1

3 6:16 37-21* 3 pt 21 ft Left Side Jump shot by Maynard, Marsha 3-4 75.0% 9-23 39.1%
3 6:07 Foul on Preece, Angie 2 5
3 6:07 Sub In: Francis, Melody Out: Preece, Angie 5 2
3 5:47 37-23* 4 ft Lane Turnaround by Francis, Melody 1-2 50.0% 10-24 41.6%
Assist by Dotson, Krystal 4 6

REB: 11 A: 6 BLK: 0 TO: 7 PF: 0
S: 10 FT: 14-21 66.6% FG: 10-21 47.6%

3 5:25 No. 1 Clay County TIME - O U T REB: 16 A: 6 BLK: 1 TO: 16 PF: 2
S: 3 FT: 1-2 50.0% FG: 10-24 41.6%

3 5:04 37-25* Driving Layup by Maynard, Marsha 4-5 80.0% 11-25 44.0%
Assist by Dotson, Krystal 5 7

3 5:02 Sub In: Curry, Tina Out: Carpenter, Ruth
3 3:30 Foul on Messer, Michelle
3 3:30 Sub In: Smith, Emily Out: Messer, Michelle
3 3:21 37-27* Follow Layup by Mullins, Becky 1-3 33.3% 12-29 41.3%
3 3:05 Foul on Dotson, Krystal 1 3
3 3:01 Foul on Mullins, Becky 2 4
3 2:48

2-4 50.0% 14-23 60.8% Smith, Emily, 2 Free Throws missed both
1 2 Foul on Grant, Gretchen

REB: 14 A: 6 BLK: 0 TO: 8 PF: 2
S: 10 FT: 14-23 60.8% FG: 10-25 40.0%

3 2:46 No. 2 Clay County TIME - O U T REB: 21 A: 7 BLK: 3 TO: 16 PF: 4
S: 3 FT: 1-2 50.0% FG: 12-29 41.3%

2 3 Foul on Grant, Gretchen 3 2:39
3 2:37 37-29* Maynard, Marsha, 2 Free Throws made both 2-2 100% 3-4 75.0%
3 2:10 *40-29

5-7 71.4% 11-27 40.7% 3 pt 23 ft Left Angle Jump shot by Feltner, Susan
3 7 Assist by Jones, Kim
6-8 75.0% 12-28 42.8% Layup Off Fast Break by Feltner, Susan
7-9 77.7% 13-29 44.8% 3 pt 22 ft Left Base Line Jump shot by
1 8 Feltner, Susan
Assist by Curry, Tina

REB: 16 A: 8 BLK: 0 TO: 8 PF: 3
S: 10 FT: 14-23 60.8% FG: 13-29 44.8%

3 1:17 Phelps No. 1 TIME - O U T REB: 23 A: 7 BLK: 3 TO: 17 PF: 4
S: 3 FT: 3-4 75.0% FG: 12-32 37.5%

3 0:47 45-31* Driving Layup by Mullins, Becky 2-4 50.0% 13-33 39.3%
3 0:05 *47-31

4-7 57.1% 14-31 45.1% Follow Layup by Grant, Gretchen

BOX SCORE: * OFFICIAL FIRST HALF * Date: 03-24-88 Site: State Tourney, Frankfort Attendance: 3,450

Team: Phelps

NO.	NAME	TOTAL FG		3-POINT		FT	FTA	REB			PF	TP	A	TO	BLK	S	MIN				
		FG	FGA	FG	FGA			O	D	T											
21	Mullins, Becky	0	2	0	0	0	0	1	1	2	1	0	0	1	0	0	14				
24	Maynard, Marsha	2	3	0	1	0	0	1	0	1	1	4	0	1	0	0	15				
42	Allen, Beth	1	3	0	0	0	0	1	4	5	3	2	0	0	1	1	8				
04	Dotson, Krystal	1	2	0	0	0	0	0	1	1	0	2	3	4	0	0	13				
14	Preece, Angie	0	1	0	0	0	0	0	0	0	3	0	0	2	0	0	4				
10	Blankenship, J.	0	0	0	0	1	2	0	2	2	2	1	0	2	0	0	7				
12	Gannon, Renae	0	1	0	0	0	0	0	1	1	1	0	0	3	0	0	6				
03	Preece, Allyson	1	5	1	5	0	0	0	1	1	0	3	0	1	0	0	6				
23	Francis, Melody	0	1	0	0	0	0	0	0	0	0	0	0	1	0	0	4				
22	Wolford, Nykole	1	1	0	0	0	0	0	0	0	2	2	0	1	0	0	3				
TEAM								2													
TOTALS		6	19	1	6	1	2	5	10	15	13	14	3	16	1	1	80				
Percentages:		HALF-----		FG		6/ 19		31.6%		3-PT.		1/ 6		16.7%		FT		1/ 2		50.0%	
		Period 1				2/ 10		20.0%				0/ 2		0.0%				1/ 2		50.0%	
		Period 2				4/ 9		44.4%				1/ 4		25.0%				0/ 0		0.0%	

Team: Clay County

NO.	NAME	TOTAL FG		3-POINT		FT	FTA	REB			PF	TP	A	TO	BLK	S	MIN				
		FG	FGA	FG	FGA			O	D	T											
24	Carpenter, Ruth	0	3	0	0	0	2	0	0	0	1	0	0	0	0	0	10				
40	Messer, Michelle	1	2	0	0	2	2	1	2	3	2	4	0	1	0	1	14				
54	Grant, Gretchen	3	5	0	0	3	4	1	2	3	0	9	0	0	0	3	13				
22	Feltner, Susan	4	4	2	2	0	0	1	0	1	0	10	4	0	0	4	14				
32	Jones, Kim	0	2	0	1	6	8	1	0	1	0	6	2	2	0	2	16				
50	Smith, Emily	0	0	0	0	2	2	0	0	0	0	2	0	0	0	0	4				
42	Curry, Tina	1	3	1	2	0	1	0	0	0	0	3	0	1	0	0	7				
20	Ponder, Katrina	0	0	0	0	0	0	0	0	0	0	0	0	0	0	0	1				
12	Sester, Kim	0	0	0	0	0	0	0	0	0	0	0	0	0	0	0	1				
44	Howard, Angela	1	1	0	0	0	0	1	0	1	0	2	0	0	0	0	0				
TEAM								1													
TOTALS		10	20	3	5	13	19	5	5	10	3	36	6	4	0	10	80				
Percentages:		HALF-----		FG		10/ 20		50.0%		3-PT.		3/ 5		60.0%		FT		13/ 19		68.4%	
		Period 1				7/ 10		70.0%				2/ 2		100.0%				8/ 10		80.0%	
		Period 2				3/ 10		30.0%				1/ 3		33.3%				5/ 9		55.6%	

OFFICIALS: Keith Walker, Tom Thompson, Alt.-L. Holmes
 Technicals: None

SCORE BY PERIODS			
Phelps	5	9	= 14
Clay County	24	12	= 36

Phelps "Lady Hornets" vs Clay County "Tigerettes"
1st Half Play by Play

Tip off at 2:30 on 03/24/88 at State Tourney, Frankfort
Produced by the K.H.S.N.A. Stat Crew with FINAL III**

PAGE : 2

Player	Team	Clay County	Time	Score	Phelps	Player	Team
Feltner, Susan	Carpenter,	Ruth, Jones, Kim, Messer, Michelle, Grant, Gretchen			Preece, Angie, Dotson, Krystal, Maynard, Marsha, Mullins, Becky, Allen, Beth		
3-3	100%	8-11 72.7%	2 7:47	*25-5			
3	5	Turnaround Layup by Grant, Gretchen Assist by Feltner, Susan	2 7:33	25-7*	Driving Layup by Allen, Beth Assist by Dotson, Krystal	1-3	33.3% 3-11 27.2%
			2 6:40		Foul on Preece, Angie	2	2
			2 6:39		Sub In: Preece, Allyson Out: Preece, Angie	3	9
5-6	83.3%	10-12 83.3%	2 6:38	*28-7			
		Jones, Kim, 1 & Bonus made both	2 6:02		Foul on Allen, Beth	3	10
0-2	00.0%	10-14 71.4%	2 6:02				
		Carpenter, Ruth, 2 Free Throws missed both	2 5:47	28-10*	3 pt 22 ft Right Side Jump shot by Preece, Allyson Assist by Dotson, Krystal	1-3	33.3% 4-12 33.3%
	2	3	2 5:28			3	3
		Foul on Messer, Michelle Sub In: Curry, Tina Out: Carpenter, Ruth	2 5:28				
2-2	100%	12-16 75.0%	2 5:17	28-12*	4 ft Lane Follow by Maynard, Marsha	2-2	100% 5-14 35.7%
		Messer, Michelle, 2 Free Throws made both	2 3:56		Foul on Mullins, Becky	1	11
1-2	50.0%	9-18 50.0%	2 3:52	*30-12			
4	6	3 pt 24 ft Left Side Jump shot by Curry, Tina Assist by Feltner, Susan	2 3:16		Sub In: Gannon, Renae Out: Preece, Allyson		
			2 2:25	*33-12			
		Sub In: Smith, Emily Out: Grant, Gretchen	2 2:08		Sub In: Francis, Melody Out: Gannon, Renae		
		Sub In: Grant, Gretchen Out: Messer, Michelle	2 2:08				
0-1	00.0%	12-17 70.5%	2 1:37		Sub In: Wolford, Nykole Out: Dotson, Krystal		
		Curry, Tina, 1 & Bonus missed 1st	2 1:22				
		Sub In: Howard, Angela Out: Feltner, Susan	2 0:42		Foul on Maynard, Marsha	1	12
6-8	75.0%	13-19 68.4%	2 0:42				
		Jones, Kim, 1 & Bonus made 1st missed 2nd	2 0:24		Foul on Wolford, Nykole	2	13
		Sub In: Sester, Kim Out: Grant, Gretchen	2 0:19				
1-1	100%	10-20 50.0%	2 0:19	*34-12	Sub In: Blankenship, J. Out: Allen, Beth		
		2 ft Lane Follow by Howard, Angela	2 0:19	*35-12			
			2 0:00	35-14*	10 ft Lane Driving by Wolford, Nykole, made	1-1	100% 5-19 31.5%

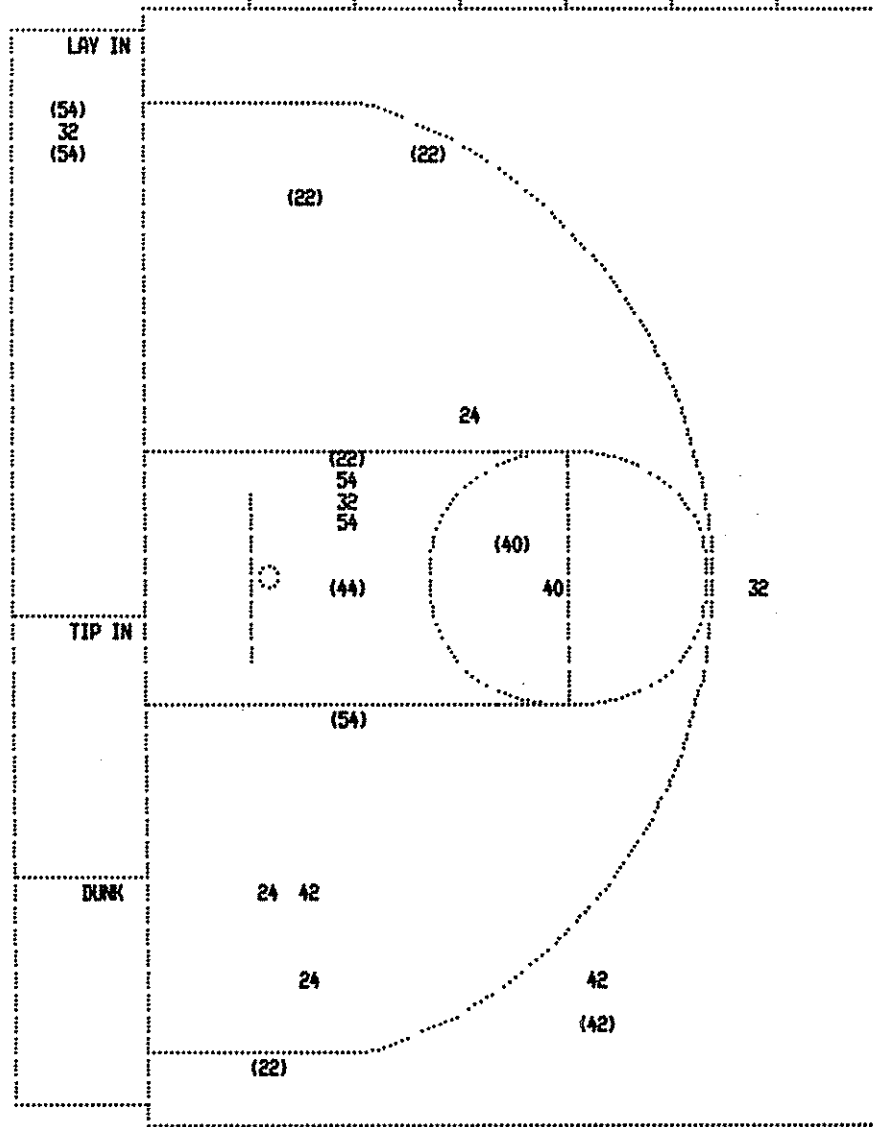
Phelps "Lady Hornets" vs Clay County "Tigerettes"
1st Half Play by Play

Tip off at 2:30 on 03/24/88 at State Tourney, Frankfort
Produced by the K.H.S.A.A. Stat Crew with FINAL III™

PAGE : 1

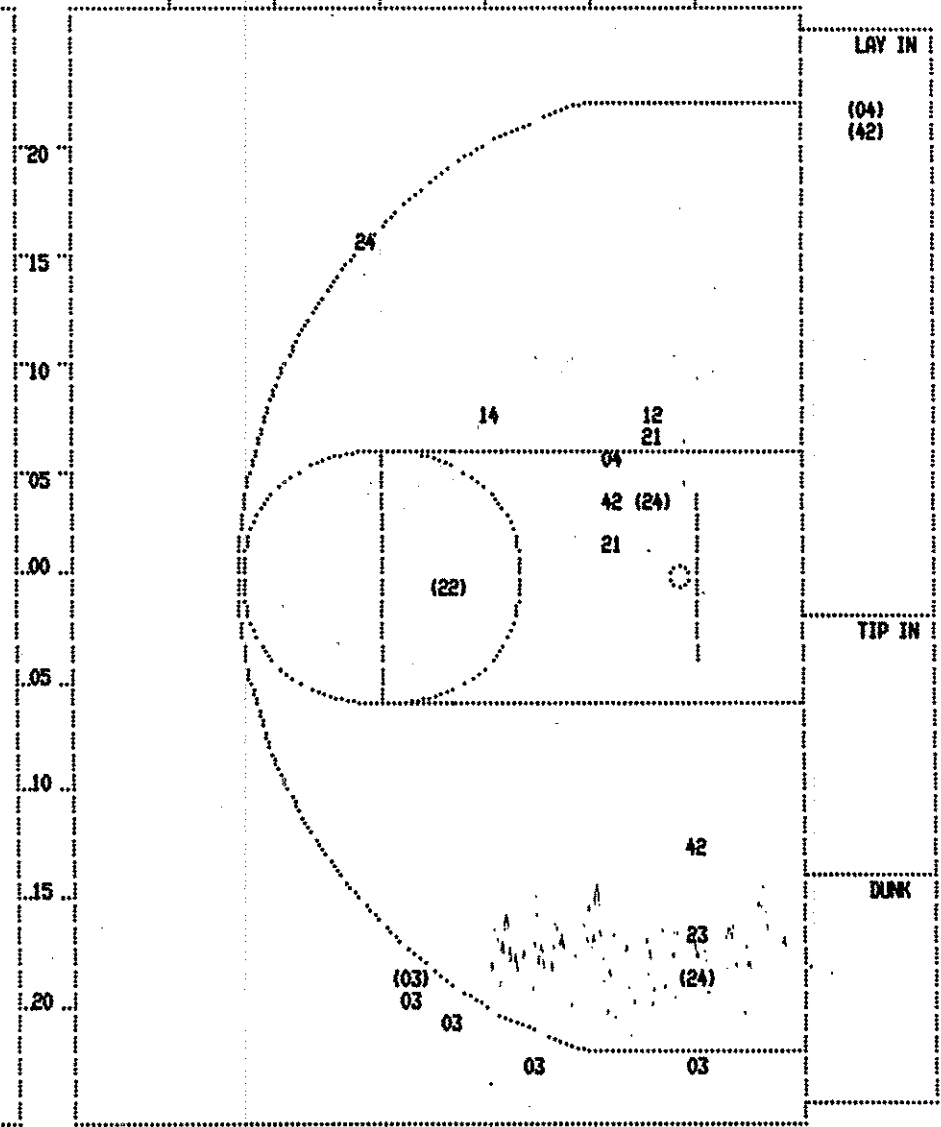
Player	Team	Clay County	Time	Score	Phelps	Player	Team
Carpenter, Ruth, Messer, Michelle, Grant, Gretchen, Feltner, Susan, Jones, Kim					Mullins, Becky, Maynard, Marsha, Allen, Beth, Dotson, Krystal, Preece, Angie		
1-2	50.0%	1-2 50.0%	1 7:33	*1-0	Ball to Lady Hornets	1	1
		Grant, Gretchen, 2 Free Throws missed 1st made 2nd	1 7:33		Foul on Allen, Beth		
			1 7:24		Foul on Allen, Beth	2	2
			1 7:24		Sub In: Blankenship, J. Out: Allen, Beth		
			1 6:59	1-2*	18 ft Right Base Line Jump shot by Maynard, Marsha Assist by Dotson, Krystal	1-1	100% 1-4 25.0%
1-1	100%	1-2 50.0%	1 6:45	*3-2		1	1
2-2	100%	2-3 66.6%	1 6:36	3-4*	Layup Off Fast Break by Dotson, Krystal	1-1	100% 2-5 40.0%
1		1 Assist by Jones, Kim	1 6:14	*6-4			
1-1	100%	3-4 75.0%	1 5:34	*8-4			
1		2 6 ft Left Side Turnaround by Grant, Gretchen Assist by Feltner, Susan	1 5:21				
1		1 Foul on Carpenter, Ruth	1 5:21	8-5*	Blankenship, J., 2 Free Throws missed 1st made 2nd	1-2	50.0% 1-2 50.0%
			1 5:15		Foul on Preece, Angie	1	3
3-3	100%	4-5 80.0%	1 5:10	*11-5			
2		3 3 pt 22 ft Left Base Line Jump shot by Feltner, Susan Assist by Jones, Kim	1 4:55		Foul on Preece, Angie	2	4
			1 4:55				
		REB: 1 A: 3 BLK: 0 TO: 0 PF: 1 S: 2 FT: 1-2 50.0% FG: 4-5 80.0%	T I M E - O U T		Phelps No. 1	REB: 2 A: 1 BLK: 0 TO: 2 PF: 4 S: 0 FT: 1-2 50.0% FG: 2-5 40.0%	
1-1	100%	5-6 83.3%	1 4:55		Sub In: Gannon, Renae Out: Preece, Angie		
2		4 10 ft Lane Jump shot by Messer, Michelle Assist by Feltner, Susan	1 4:46	*13-5			
			1 4:14		Foul on Blankenship, J.	1	5
3-4	75.0%	3-4 75.0%	1 4:12	*15-5			
4-4	100%	6-8 75.0%	1 3:27	*17-5			
2-2	100%	7-10 70.0%	1 2:34	*19-5			
			1 1:46		Subs In: Preece, Allyson, Francis, Melody, Wolford, Nykole Out: Dotson, Krystal, Mullins, Becky, Maynard, Marsha		
		Sub In: Smith, Emily Out: Grant, Gretchen	1 1:37				
		Sub In: Curry, Tina Out: Feltner, Susan	1 1:37				
1		2 Foul on Messer, Michelle	1 0:55				
			1 0:47		Foul on Wolford, Nykole	1	6
1-2	50.0%	4-6 66.6%	1 0:47	*22-5			
		Jones, Kim, 2 Free Throws made 1st missed 2nd	1 0:40		Sub In: Maynard, Marsha Out: Wolford, Nykole		
			1 0:21		Foul on Gannon, Renae	1	7
		Sub In: Sester, Kim Out: Messer, Michelle	1 0:21				
3-4	75.0%	6-8 75.0%	1 0:21	*24-5			
		Jones, Kim, 1 & Bonus made both	1 0:07		Foul on Blankenship, J.	2	8
			1 0:07		Sub In: Hatfield, Tif. Out: Blankenship, J.		
2-2	100%	8-10 80.0%	1 0:07	*26-5			
		Sub In: Howard, Angela Out: Jones, Kim					
		Smith, Emily, 1 & Bonus made both					

FIRST HALF SHOT CHART Produced by the K.H.S.A.A. Stat Crew with FINAL III™



Clay County

Player	Player	Player
24 - Carpenter, O/ 3 0.0%	42 - Curry, Tin 1/ 3 33.3%	
40 - Messer, Mic 1/ 2 50.0%	44 - Howard, An 1/ 1 100.0%	
54 - Grant, Gre 3/ 5 60.0%		
22 - Feltner, S 4/ 4 100.0%		
32 - Jones, Kim 0/ 3 0.0%		
Layups 1-9 Ft 10-15 Ft Over 15 Ft 3 Pointers Total		
2 / 3 3 / 6 1 / 5 1 / 2 3 / 5 10 / 21		
66.7% 50.0% 20.0% 50.0% 60.0% 47.6%		



Phelps

Player	Player	Player
21 - Mullins, B 0/ 2 0.0%	03 - Preece, Al 1/ 5 20.0%	
24 - Maynard, M 2/ 3 66.6%	12 - Gannon, Re 0/ 1 0.0%	
42 - Allen, Bet 1/ 3 33.3%	22 - Wolford, N 1/ 1 100.0%	
04 - Dotson, Kr 1/ 2 50.0%	23 - Francis, M 0/ 1 0.0%	
14 - Preece, An 0/ 1 0.0%		
Layups 1-9 Ft 10-15 Ft Over 15 Ft 3 Pointers Total		
2 / 2 1 / 6 1 / 3 1 / 2 1 / 6 6 / 19		
100.0% 16.7% 33.3% 50.0% 16.7% 31.6%		